



SHOULD I MIGRATE TO THE CLOUD?

Clint Latham

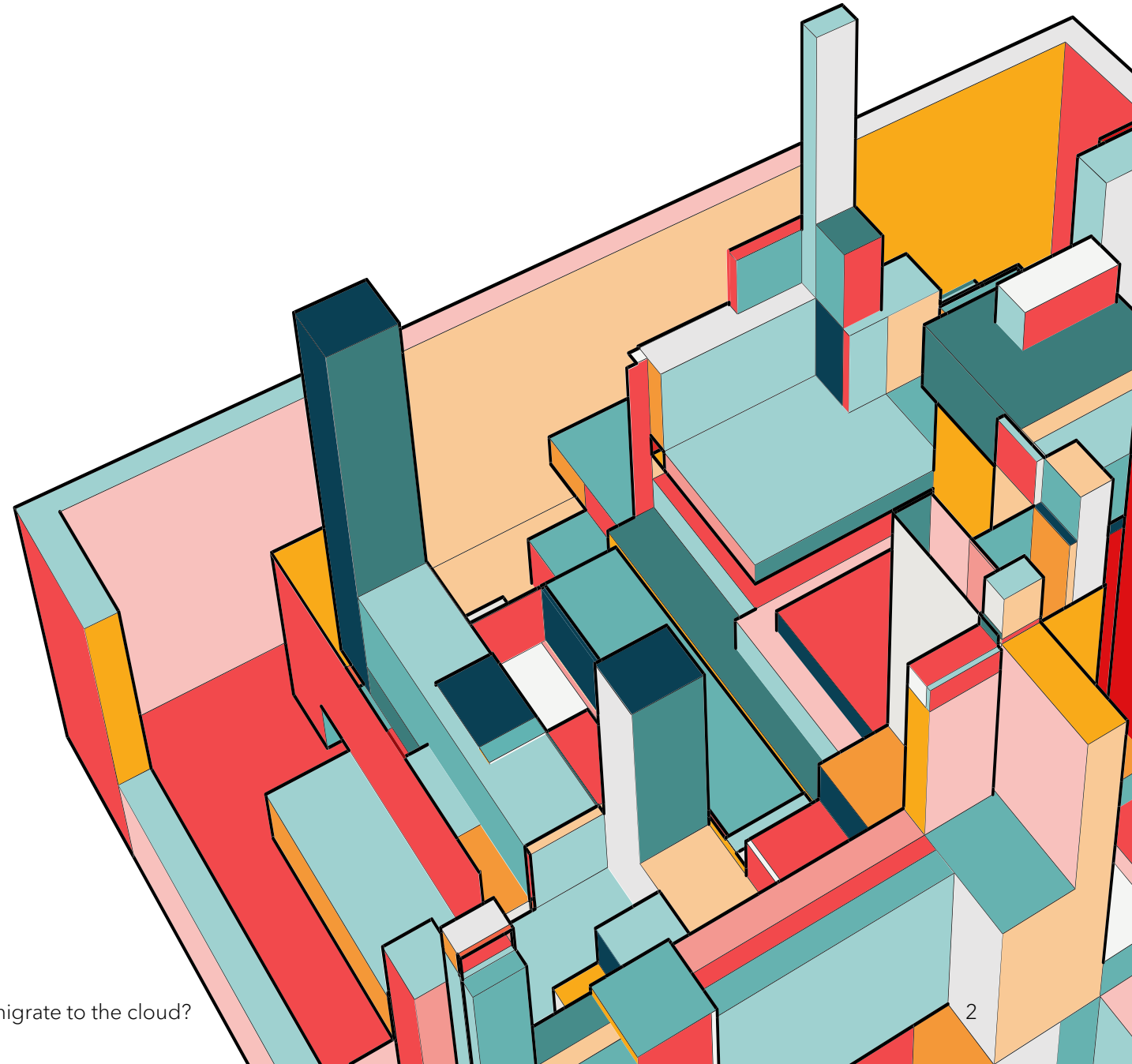
ABOUT ME

Over 15 years Software & Networking Security
Experience

Bachelors of Information Technology -
Metropolitan State University
Juris Doctorate Degree - Purdue University

11/10/2022

Should I migrate to the cloud?



MY GREATEST TEACHERS



11/10/2022

Should I migrate to the cloud?

WHAT IS THE CLOUD?

I was surprised by this concept as well!



Should I migrate to the Cloud?

TRANSFORMATIVE TECHNOLOGY



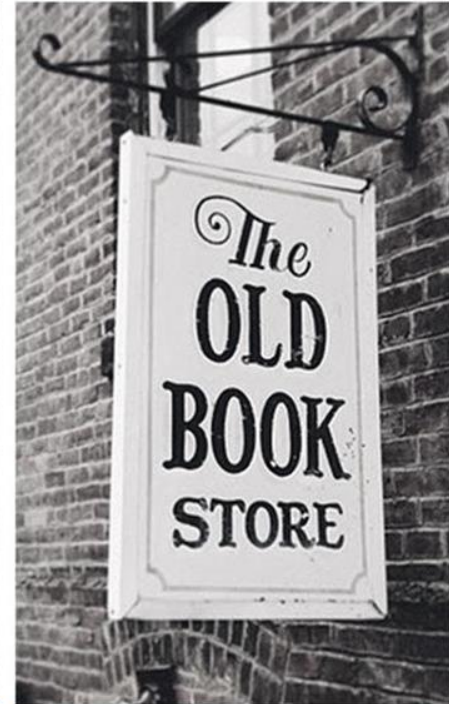
NETFLIX



UBER



Skype



amazon.

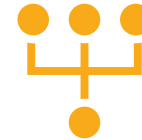
INFORMATION MANAGEMENT



Hardware



Software



Methodology -
What to collect

INFORMATION MANAGEMENT



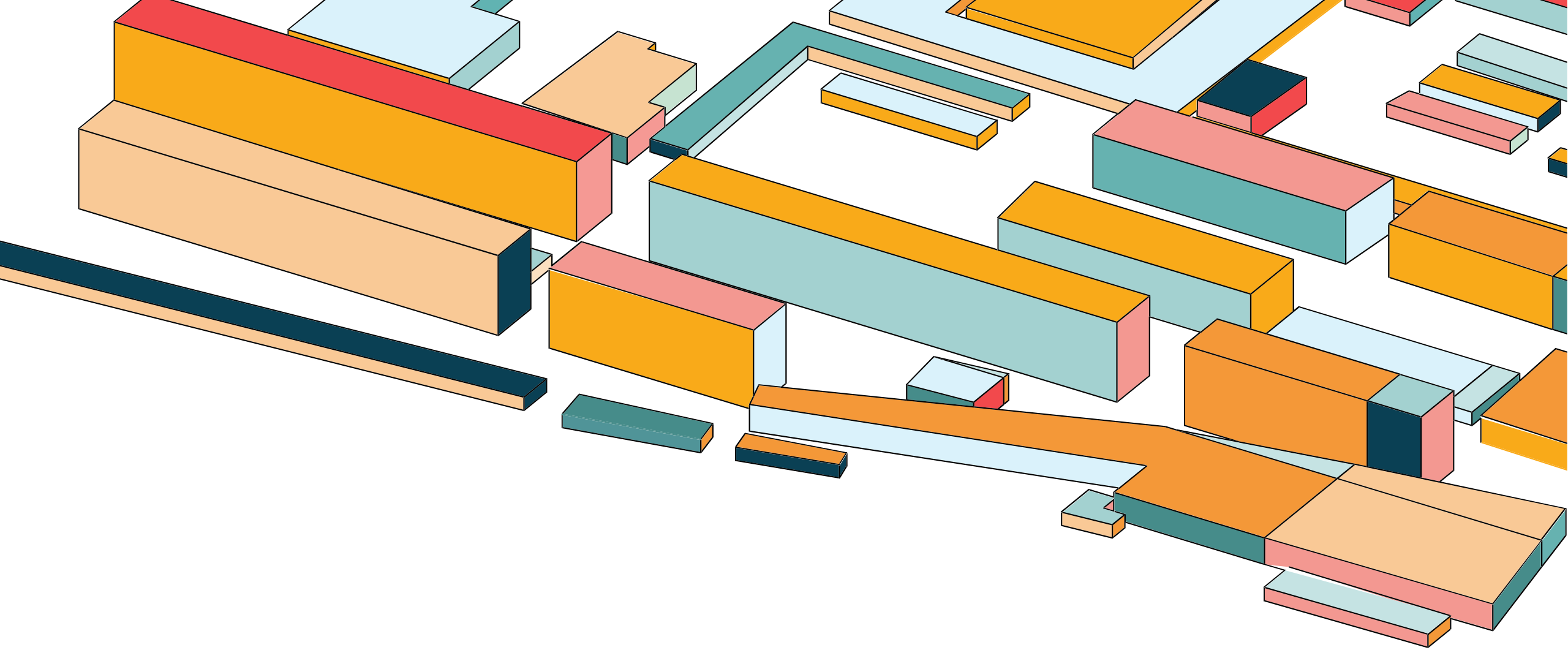
Process-
How we collect
data



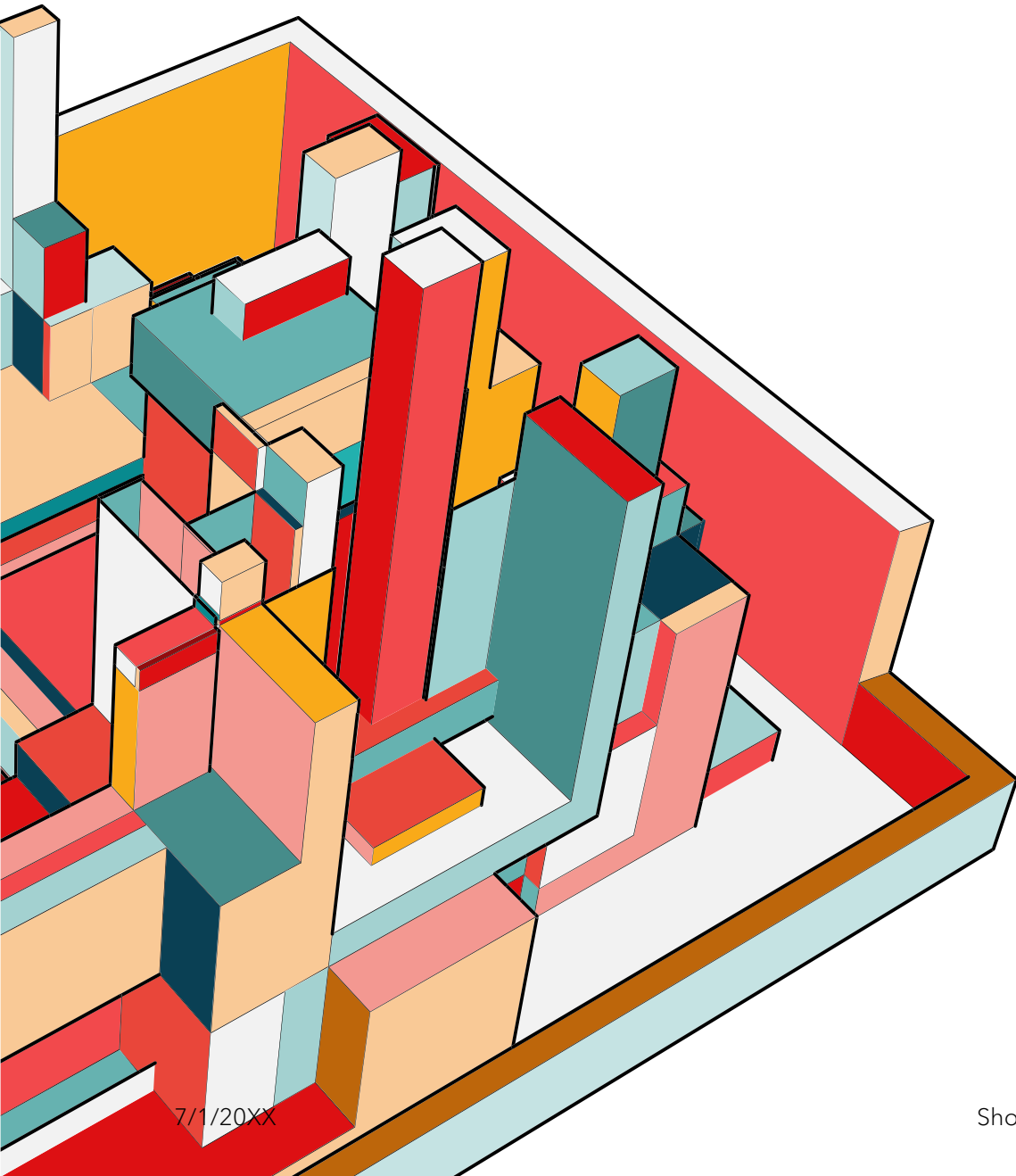
People



Is the heartbeat of
our hospital



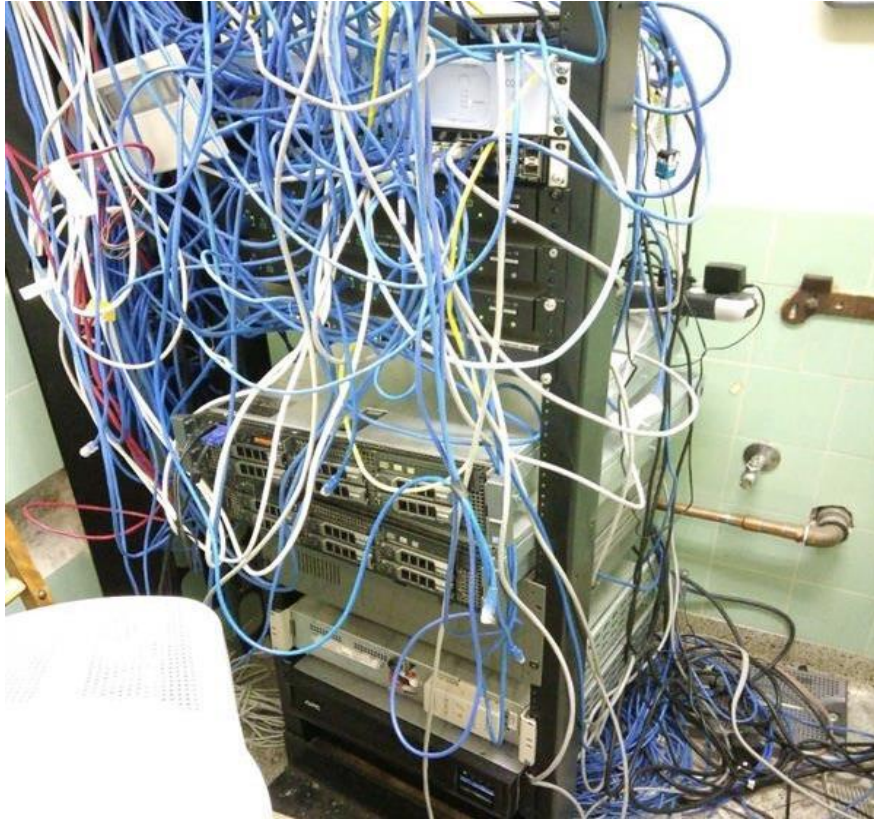
REASONS TO MOVE TO THE CLOUD



REDUCED DEPENDENCY ON HARDWARE

By being in the cloud you can reduce your dependency on your local hardware. Making PC replacements easier.

IT INFRASTRUCTURE



THE GREAT BATTLE!



VS



Cloud Software tells us we
don't need the server once we
migrate.

EzyVet

IT says we do need the server.

Azure Apline Server

THE TRUTH

Is a mixture of both

Server Roles

Need to be reviewed and migrated to other services

Can't Just Power it Off

No you can't just power the server off once you migrate

Historical Data

Yet to see a cloud migration where a hospital still didn't reference old server data for a period of time.

MAJOR SERVER ROLES

DNS

Domain Name
Services

Centralized computer
management

DHCP

IP Addresses

Allows PCs to find each
other

Printing

Centralized Printer
Sharing

Easy Printer Sharing
across the hospital

MAJOR SERVER ROLES

Integrations

Labs, X-rays, Etc

Other services that talk to
your PIMs

Files

Documents

Files that everyone needs
access to

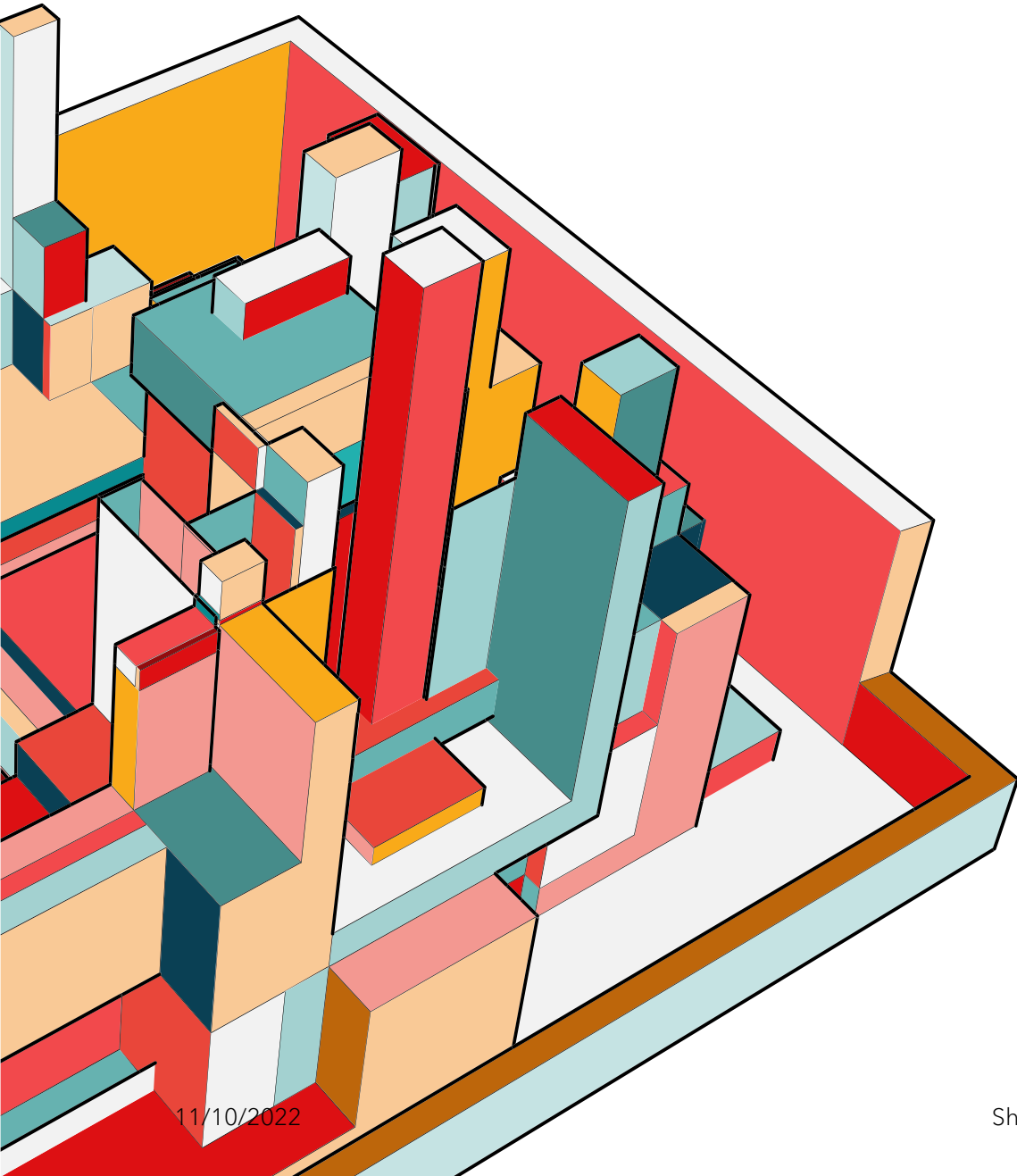
.

DATA MIGRATION ISSUES

Data migrations are tough!

- We don't have an industry standard for coding etc
- Makes it hard to map correctly into the new system
- Legacy systems make it tough to migrate





RISKS

Moving to the cloud does not come without it's risks. These are some items you should consider before moving to the cloud.

POTENTIAL RISKS

100% Dependent Upon the internet

You should have a backup internet connection and business class firewall.

You don't control the data

You put all your data in the hands of someone else. What are they doing with your data

Supply Chain Attacks

When a hacker looks to attack a single vendor to threaten 1000's of businesses.

Accesses by anyone from anywhere

BEC attacks with re-invoicing your clients is a real risk. What secure protections does the vendor have in place.



CLOUD SOFTWARE CHECKLIST

- 1) Is the PMS a true cloud-based software?
- 2) What browsers is the PMS compatible with?
- 3) Does the PMS support local printers?
- 4) How frequently does the PMS get updated?
- 5) What is the Service Level Agreement for service outages of the PMS?



CLOUD SOFTWARE CHECKLIST

- 6) Is the PMS willing to provide customer references?
- 7) What other software and programs does the PMS integrate with?
- 8) Does the PMS have a data loss prevention policy?
- 9) Does the PMS have a customer success management program?
- 10) How many customers does the PMS have?

THANK YOU

Clint Latham

clint@lucca.vet

www.lucca.vet

